



# Association of Natural Resource Extension Professionals

Spring 2006

## Inside this issue:

D.C. Update	2
Journal of Extension	3
Treasurer's Report	3
National Network for Sustainable Living	4
Officers	5
What's Happening	5
Position Announcements	5

### President's Report

The best news I have to report is that the Michigan Community and Natural Resource Development Association has voted to affiliate with ANREP as a state chapter. I had a chance to visit with them last year at their state meeting. They are a really active group and we are fortunate to have them on board. That now brings us to seven state chapters. You can find information about each on our webpage under Affiliates.

Our May conference in Utah is really shaping up and I look forward to seeing you there. We recently got the good news that Dan Kugler, CSREES Deputy Administrator for Natural Resources and Environment, will be able to join us. This will give us an opportunity to showcase our association and offer him some good ANREP hospitality. Mike Kuhns, Susan Donaldson, and Eric Norland have done an outstanding job in putting the conference together and you should thank them when you get a chance.

At the national and even international level we are involved on a number of fronts. ANREP is a partner with the Canadian Forest Service, IUFRO, and CSREES in hosting the North American Natural Resources Extension Forum. The initial meeting is about Extension capacity building and sustaining Extension across borders. Participants, over 30 of them, have been invited from US border states and all Canadian provinces. One result could be that we may be able to expand our membership into Canada from the contacts made there.

The eXtension effort is really moving forward. If you have not been able to stay current with eXtension, please look at their webpage - <http://about.extension.org/>. They just completed their second round of

funding invitations or Call for Engagement. Look for the third round this fall. eXtension is a joint effort of all state Cooperative Extension Services and is funded by 0.8 of one percent of Smith-Lever funds. ANREP is one of the partners on the Internal Partners Advisory Committee. The IPAC committee looks at ways to improve eXtension and how to generate more state-level participation. They also strive to assess if the effort is really working and they measure how Extension professionals view it.

We are in our second year of having two RREA Interns in Washington, DC. Their assignment is to work with NASULGC in trying to enhance awareness and support for increased RREA funding. NASULGC provides about 85 percent of the funding to support the positions. Last year Nat Frazer and Mel Baughman made great strides for us in compiling and standardizing state RREA reports and also making contacts with lawmakers and with national associations that support and recognize the value the RREA programs. We recently learned that the Society of American Foresters, in their 2007 appropriations testimony to the House Appropriations Committee, Subcommittee on Agriculture, Rural Development, and Related Agencies, included support for RREA at the authorized level of \$30 million. This is important news. This year the interns will continue the work started in 2005 plus start new awareness efforts.

As we have for several years, ANREP is represented on NASULGC's ECOP Leadership Advisory Council. One thing the

Council is looking at this year is globalization and what Cooperative Extension's role is. They will focus on how globalization affects CES and what skills are needed for us to remain a viable information source.

There are many other activities to report but I will close with three. We have representatives on JCEP's Policy Issues Leadership Development (PILD) Conference planning committee. This meeting is held every year in Washington DC and I can't think of a better way for an Extension professional to learn how policy and federal funding really is formulated nationally. You also get a chance to visit with you representatives in Congress. Last year our 2005 president, Janean Creighton, was chair of the PILD planning committee and this year our two representatives are Tom Basden and Eric Eberly.

ANREP now has presence on the Journal of Extension Editorial Board. Doug Stienberger is our representative. Recently, he was selected chairman-elect of the JOE board and will be the chair in 2007. Finally, Andy Londo and Gary Hawkins are our planning committee members for the 2008 Galaxy conference in Indianapolis. Andy is responsible for the program development and Gary will handle evaluations.

I just do not have room to mention all the other work being done. In the future, I will try to summarize more about the new committees we have and what their goals are. It is an exciting time for ANREP.

Ben Jackson  
2006 President



The National Research Initiative (NRI) is proposed to increase by \$66 million.

Greetings from the land of cherry blossoms! We are nearing the end of this year's bloom, and as usual it has been quite a sight to see. To the uninitiated, including myself, all of the attention to a bunch of bloomin' trees seemed a bit much. Then, I saw it for myself. Tens of thousands of people flock to the Tidal Basin for a ten-day period every year and simply wander around under the gorgeous canopy of white and pink blossoms. Doing so is also a great de-stresser.

### Budgets

And stress there is in D.C. these days. The political debates and posturing suck up a lot of what would otherwise be constructive energy. The federal budget is both stressed and stretched. The President's Budget for FY 2007 was released in early February. There are several points of interest for our university partners:

- The Extension formula funds remain flat, at about \$273 million.
- The Renewable Resources Extension Act remains flat, at \$4 million.
- The McIntire-Stennis Cooperative Forestry Research Act remains flat, at \$22 million. The administration proposes to convert this 100% formula fund program to 41% formula funds and 59% competitively-awarded funds in FY 2007.
- The National Research Initiative (NRI) is proposed to increase by \$66 million.

The NRI is not just for research anymore! CSREES is permitted to award up to 25% of the NRI funds to integrated projects. "Integrated" means research, extension and education. Some of the NRI pro-

## D.C. Update

grams that would be of most interest to ANREP members have been designated as integrated programs, meaning that proposals that include more than just research are desired. These programs include managed ecosystems and invasive species. While the next request for applications (RFA) will not be issued until late summer/early fall, it would be worth checking out the current RFA to see what is involved. Generally speaking, integrated programs are not receiving many fundable integrated proposals. Now would be a time to team up with your researchers and teaching faculty and think about possible projects for the next RFA. Go to: [http://www.csrees.usda.gov/funding/nri/nri\\_topics.html](http://www.csrees.usda.gov/funding/nri/nri_topics.html) to view the current topics and to see which programs are integrated.

### The next "Farm Bill"

The current bill expires on September 30, 2007. Whether or not a new bill will be developed or the existing one continued for an additional year is a big guessing game right now. In preparation for a new farm bill, the Secretary of Agriculture has conducted 52 farm bill forums around the country, and personally hosted 21 of them. To find out what was being said, go to [www.usda.gov](http://www.usda.gov) and click on "Farm Bill Forum Comment Summaries." Scroll through the list of topics to read the comments that were made. Were natural resources, environmental issues, and extension identified and supported? You decide.

### We are here to serve you

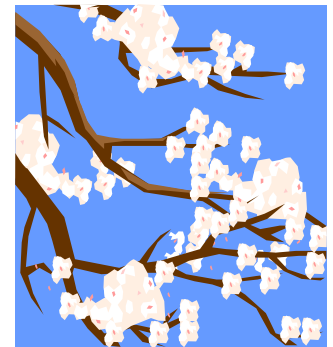
I know, you've heard it before. But it is true that, at least

in the Natural Resources and Environment Unit, the national program leaders and program specialists are extremely interested in and supportive of the great work you do. Tell us about it! Do not hesitate to call, e-mail, or send us information. Go to: <http://www.csrees.usda.gov/nea/nre/nre.html> to see a list of programs, and equally important, the names and contact information for the program staff.

Best wishes for a great Spring!  
Eric Norland  
National Program Leader,  
Forest Resource Management  
**Submitted by:**  
Eric R. Norland, Ph.D., CF  
National Program Leader,  
Forest Resource Management

USDA CSREES  
1400 Independence Ave. SW  
Stop 2210  
Washington, DC 20250-2210

[enorland@csrees.usda.gov](mailto:enorland@csrees.usda.gov)  
202-401-5971



## Think Your Program Has Great Impact? Don't Hide It!

**Submitted by:** Doug Stienbarger, ANREP Representative to the Journal of Extension Board of Directors

However great the impacts your program may have in your area, your program impacts could be even greater if you disseminate information about them through JOE, the Journal of Extension. Why doom one of your far flung colleagues across the country to re-invent something you have already done so well? Why doom yourself to missing out on the connection and potential feedback from the mega "braintrust" Extension represents? Ok, it

takes some time. Try to think of it as another project: allocate resources (your time) and make a timeline. Afraid you do not write so well? Among your colleagues, you will find someone more than willing to help you edit. I ask my wife to edit, she likes that! All too often, Extension practitioners do not allow themselves the time to reflect on what they do because they are too busy "doing". Writing up your thoughts or programs serves triple duty: it

structures your reflection, it helps you professionally, and you benefit your colleagues' programs nationally. JOE provides an opportunity to bring out and highlight some of the best that Extension produces.

**The Process.** All you need to know can be found at <http://www.joe.org/sub1.html>. Submit a **Feature article** (3000 words) to discuss concepts and research findings of particular interest and significance to

Extension professionals and to Extension's knowledge base, methodology, effective practice, and organization. Or, write up a **Research in Brief** (2000 words) summarizing research results of importance to your Extension colleagues.

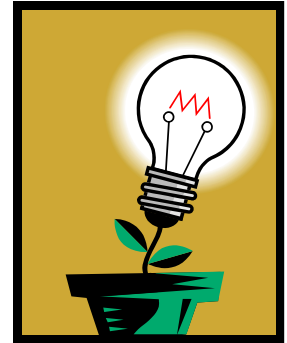
Interested in the quick and dirty practical side to things? Try writing an **Ideas at Work** (1000 words) article describing novel ideas, innovative pro-

grams, and new methods. Or, you might write a **Tools of the Trade** (1000 words) article on specific materials, books, techniques, and technologies you think useful to your colleagues.

Got something on your mind? Write a **Commentary** (1500 words) to present a thought-provoking opinion on an issue of concern to Extension nationwide.

### Who do you think reviews all these articles?

You Do! JOE always needs reviewers. Currently, JOE especially needs reviewers in agribusiness, communications, niche marketing, information technology and agricultural economics. View <http://www.joe.org/ques1.html#Q12> to see how you can become a JOE reviewer.



Why doom yourself to missing out on the connection and potential feedback from the mega "braintrust" Extension represents?



## Treasurer's Report



I begin my ANREP Treasurer role by extending a heartfelt thanks to my predecessor, Dr. Deborah Hill, University of Kentucky. During her decade long term of office she effectively assisted ten presidents, untold numbers of regional and committee leaders, five national conference organizers, and the Executive Secretary. Her service to ANREP was faithful, effective and fiscally prudent. Following in her footsteps will be a challenge. I can only hope that my service to ANREP is half as effective as Dr. Hill's.

Pursuant to the Treasurer challenges, I am pleased to acknowl-

edge receipt of the ANREP Treasurer records and most of the funds (some outstanding checks yet to clear). Included with the records was a March 15, 2006 cursory financial "audit" statement by a Certified Public Accountant. While not an official audit, this report documents fiscal prudence and solvency for calendar year 2005 and a solid fiscal basis for calendar year 2006.

Subsequent to receipt of Dr. Hill's records I have been asked to develop a long-range (3 year) budget plan for the Association. This plan is to be reviewed and discussed at ANREP's April 20, 2006 Executive

Committee conference call. Decisions from this call will direct ANREP activities for the next several years. I look forward to the forthcoming discussion and to the resulting guidance and counsel.

Should anyone have questions or comments about ANREP's Treasurer materials please feel free to call (706-542-3098) or e-mail: [lsbiles@worldnet.att.net](mailto:lsbiles@worldnet.att.net).  
Sincerely,  
Larry E. Biles  
Treasurer



## National Network for Sustainable Living

You might have noticed the NNSLE workshop scheduled for Sunday afternoon, May 14<sup>th</sup> and wondered what it was all about... Or then again, you could have missed it completely in your eagerness to check out what was being served at the opening reception... Either way, let me tell you what it's about.

At the last ANREP conference in West Virginia, a few of us gathered around a table talking about our work – just like Extension folks everywhere. I remember bemoaning the fact that I felt like I was the Lone Ranger, doing my sustainable living stuff all by myself. Everyone chimed in with the same lament. Somehow -- at lightspeed – we decided to band together, work to create a curriculum, call ourselves a national network, and make me the first director! I'm still reeling.

So, the mission of the National Network for Sustainable Living Education (NNSLE), established in 2004, is to "improve the quality of life and reduce environmental degradation by fostering new consumption patterns and sustainable lifestyles through CSREES Extension programs." In a nutshell, we're building a natural resource and Extension network to investigate, educate, and model sustainable living practices. Our target audiences are individuals, families, institutions, businesses, camps and schools – in short, everyone we can

reach through our Extension connections!

We've spent a lot of time on the phone and email, clarifying exactly what it is that we want to do – the adage "Go slow to go fast" applies here. We've added some folks too.

**May 14<sup>th</sup> will be our first, in-person meeting** since that pivotal gathering at Wheeling. We'll be focusing on two things: First, identifying the pieces of that national sustainable living curriculum and how it's going to go together. Second, we're creating a sustainable camp certification process for those of us involved with youth and family camp experiences.

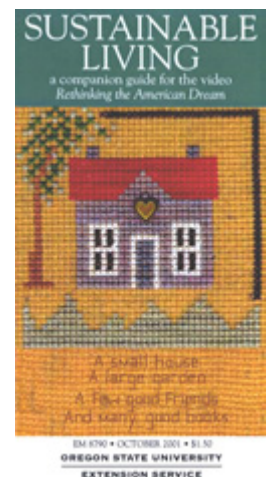
Remember filling out the NNSLE sustainability survey when you registered for the upcoming ANREP conference (you DID register, didn't you?)? The preliminary results will be announced at the opening session on Monday morning. More in-depth information will be available at the poster session and also in the ANREP newsletter after the conference.

There. Now you know. Please join us on Sunday if you can. 10 am - 4 pm. There's plenty of opportunity for hard work and lots of fun! If you're in the P&T process, this will be a great scholarly addition to your dossier.

Contact me if you have questions, or talk with any of the NNSLE'ers at the conference; our nametags will have NNSLE on them. See you in Park City! Viviane [viviane.simon-brown@oregonstate.edu]

Submitted by *Viviane Simon-Brown*

The mission of the  
National Network for  
Sustainable Living  
Education (NNSLE)



## 2006 ANREP Conference



### 2006 ANREP Officers

President: Ben Jackson  
 President-Elect: Viviane Simone-Brown  
 Immediate Past President: Janean Creighton  
 Treasurer: Larry Biles  
 Southern Region Representative: Will Sheffhall  
 Western Region Representative: Alix Rogstad  
 North East Region Representative: Nicholas Polanin  
 North Central Region Representative: Mike Reichenbach

Park City, UT  
 May 14-17, 2006

The purpose of this conference is to help Extension professionals and those who work with them share their programming successes and challenges and learn from others – to facilitate

communication, cooperation and networking among natural resource Extension educators. This interaction will strengthen Extension program needs assessment, development, delivery, and impact evaluation skills, thus enabling participants to better address traditional and

emerging issues important to a diverse clientele. Sharing of information and experiences will foster multi-state, multi-institutional, and global collaborations. Other important outcomes include building a cohesive, structured, multi-disciplinary support base for Extension natural resource programs in the future, and enhancing the visibility, credibility, and relevance of natural resource programs in the context of Extension's overall mission.

For additional info, please go online

**We're on the Web!**  
[www.ANREP.org](http://www.ANREP.org)

## What's Happening?



**Submitted by: Jennifer Seitz**  
 University of Florida  
 2006 Public Issues Leadership Development Conference  
 "Capital Steps Towards Leadership"  
 April 24-27, 2006 in Arlington, Virginia  
 Additional information at <http://www.jcep.org/>

5th Natural Resource Extension Professionals Conference  
 "Finding the 'Ability' in Sustainability"  
 May 14-17, 2006 in Park City, Utah  
 Additional information at <http://www.anrep2006.org/>

2006 Annual Meeting and Professional Improvement Conference  
 National Association of County Agriculture Agents  
 July 23-27, 2006 in Cincinnati, Ohio  
 Additional information at <http://ces.ca.uky.edu/kacaa/2006%20Annual.htm>

2006 NAE4-HA National Conference  
 "Quest for Spirit and Imagination"  
 October 22 – 26, 2006 in Milwaukee, Wisconsin  
 Additional information at <http://4h.uwex.edu/nae4ha/>

National ESP Conference  
 "On the Waterfront of Professional Excellence"  
 November 14-17, 2006 in Annapolis, Maryland  
 Additional information at <http://espnational.org>

Technology Transfer and Extension Conference  
 August 2-4, 2006 in Hot Springs, Arkansas  
 Additional information at <http://sref.info/2006/techtransfer>

### Position Announcements

[Manager, Center for the Integration of Water and Land Use](#)  
 University of California - Davis  
 Davis, CA  
 Deadline: April 28, 2006

[Natural Resource Administrator](#)  
 Town of Bluffton  
 Bluffton, SC  
 Deadline: April 30, 2006

[Assistant or Associate Professor of Forestry Extension](#)  
 Department of Natural Resource Ecology and Management, Iowa State University  
 Ames, IA  
 Deadline: May 31, 2006

Ken Gioeli, Editor  
 University of Florida  
 St. Lucie County Cooperative Extension  
 8400 Picos Road, Ste 101  
 Fort Pierce, FL 34945  
 Phone: 772-462-1660  
 Fax: 772-462-1510  
 Email: [ktgioeli@ifas.ufl.edu](mailto:ktgioeli@ifas.ufl.edu)